

# Omlet



[www.Omlet.co.uk](http://www.Omlet.co.uk)



# Welcome to Omlet's wonderful world!

If you have been thinking about keeping chickens for a while but just didn't know where to start or you want to treat your flock to a fabulous new home, then you'll be delighted with the new range of eglu chicken houses.

Using the experience of thousands of delighted customers we have developed the eglu and our personal service to offer you a truly innovative, practical and fun way of keeping chickens.

On our website you can find further detailed advice on looking after your chickens and we're always delighted to help on the phone.

We hope you enjoy the brochure and feel inspired to add these enchanting pets to your garden.

**James, Johannes, Simon and William**

## 'I prefer to use eggs that I know have been produced by happy chickens'

**Peta - Brackley**

For anyone considering keeping chickens, I would not hesitate to recommend the service provided by the members of the Omlet team. They are extremely knowledgeable and always happy to address any problems or queries their customers might have. The eglu provides an attractively modern, safe and easily cleaned home for your chickens and it will happily fit into any garden scheme.



# Introducing the eglu family

**eglu**

**eglu cube**



Suitable for 2-4 chickens



Suitable for 6-10 chickens with 3m run

**The Eglu** is the worlds best selling chicken house. Recognised for its award winning design, thousands of owners and their chickens enjoy using their eglu every day. It's a complete package that is ideal for the first time chicken keeper in the town or country garden. Suitable for up to 4 chickens, see page 4 for more information.

**The New Eglu Cube** is a revolutionary chicken house for keeping up to 10 chickens. It is based on the same innovative technology as the original eglu and makes keeping a larger number of chickens practical, fun and rewarding. Easy to move, clean and maintain it is an ideal home for an established or growing flock. See page 6 for more information.

**No Foxes Allowed™** is the eglu's proven defence system against predators. The run is made of durable 3mm steel weldmesh - impossible for vermin to break. A unique anti-tunnel skirt sits flat on the ground and prevents animals from digging under the run. Over 20,000 chickens rely on the eglu's No Foxes Allowed™ defence system to keep them safe at night.



### Eglus - The Essential Facts

- Easy to clean
- Twin walled insulation
- Easy to move
- Long lasting
- Secure
- Low maintenance
- Available in 6 great colours
- Looks great in your garden



# Choosing your chickens...

## Omlet's Chicken Delivery Area

We deliver and install the eglu complete with organically fed chickens throughout a large part of the UK. The map shows our location and approximate delivery area for an eglu with chickens. Please call or go online to check whether your address falls within the area.

If you live within the chicken delivery area you can choose from 2 delightful breeds of chicken. The magnificent Gingerhut Ranger and the chic Miss Pepperpot are both excellent egg layers and friendly pets. You can find out much more about them on the opposite page.



Delivery area for Omlet chickens

## Omlet Recommended Chicken Breeders

If you already have chickens or live outside our chicken delivery area the eglu will be delivered directly to your home using our efficient national courier service.

To make choosing your own chickens easy we provide you with a comprehensive list of your local breeders and a guide on buying chickens with tips, questions to ask and descriptions of the most popular breeds available.



Omlet recommended chicken breeders



# Chickens

**Chickens Are Eggcellent** - Friendly, fun and rewarding to keep, chickens are a great addition to your garden. They can provide delicious, fresh eggs all year round, make use of kitchen leftovers and are a natural way of controlling garden pests such as slugs. They become very tame, respond to names (and treats such as grapes!), get on well with other animals and make excellent pets for children.

Chickens are hardy out-door animals with an average lifespan of five years. Essentially ground dwelling, they are unable to fly high or over long distances. In fact they will remain in your garden providing it has a fence approximately 1.5m (5ft) high.

**Fresh Eggs Every Morning** - With their charming characters Omlet's specially chosen chickens, the Gingernut Ranger and Miss Pepperpot will give you hours of pleasure. They are particularly well-suited to domestic gardens because of their docile nature and excellent egg laying. Organically fed, they will lay their first egg in 6 weeks (or less!) We only supply female chickens which, unlike cockerels, don't crow.

**Keeping Chickens In A Garden** - They take about a week to settle in to their new surroundings and can then be let out to explore the garden. Chickens always come home to roost at dusk. When they have taken themselves to bed, you simply close the eglu door behind them. If you have a small garden or would like to keep the eglu in one place, then you can keep your chickens on an area covered in wood chippings.

**Going Away For The Weekend?** - You can happily leave your chickens in the eglu and run by simply topping up the feed and water containers before you go. For longer breaks, a friend or relative will usually be more than happy to look after your chickens in return for the fantastic eggs.



Yolks the colour of the setting sun...

## Help is always at hand

The service and support that Omlet provides you has been designed with the same care and attention to detail as the eglu. Our guide, which you receive with the eglu, describes all you need to know about keeping your chickens happy and healthy. The Omlet website is a great way to find out even more; you can discover the fascinating history of chickens, try one of our tasty recipes and even make your chicken a star by sending us a photo for the gallery!

Whether Omlet are supplying you with chickens or you are finding them yourself, we are always happy to advise you on the most suitable hens for your requirements.

When you buy from Omlet you can have complete confidence that you are buying a home that has been perfectly tailored to the needs of you and your pet. With helpful support always on hand you will soon feel like an expert. Keeping chickens for pleasure in your garden has never been easier.



### Miss Pepperpot:

Beautiful iridescent beetle black feathers characterise this hen. She has been bred from the 'Rhode Island Red' and the 'Maran' to create a lively hen capable of laying 5-6 eggs a week.

### Gingernut Ranger:

Dark russet red with accented black tail feathers, this is a perky chicken. She lays 5-6 large tasty eggs a week and has an inquisitive nature. She will never be far away if you are out in the garden.



## Chickens - The Essential Facts

**You don't need a cockerel:** Female chickens lay just as many eggs without a cockerel and only cockerels crow in the morning.

**Number of Eggs:** The number of eggs a chicken lays varies from breed to breed, but Miss Pepperpot and the Gingernut Ranger will lay on average 6 eggs per week each.

**Other animals:** A lot of people who keep chickens have a cat or dog and chickens get on fine with both. If in doubt, be cautious and introduce your other pets to your chickens gradually. Having dogs can help to deter foxes.

**Economics:** It only costs 3p a day to feed a chicken and over a year you could save as much as £120 on eggs with two chickens.

**Lifespan:** Chickens live for around 4 to 5 years.

**Number of chickens:** If you are keeping chickens for the first time, we recommend you start with between 2 and 4 chickens.

**Will I be able to pick up my chickens?** Yes, the more time you spend with your chickens the tamer they will become.

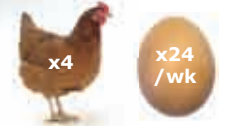
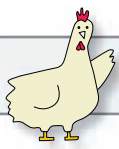
**Can chickens fly?** It's extremely unlikely you will see a flock of chickens flying overhead! Breeds like the Gingernut Ranger and Miss Pepperpot are essentially ground dwelling and don't do more than large hops.

## 'The eglu is the only way for us to keep hens'

### Reg and Barbara - Bodicote

For several years we have bought only organic eggs, but 'Henny' and 'Penny' produce eggs that are much tastier, and we now have food-yards rather than food-miles to our credit. The eglu is the only way for us to keep hens. It doesn't take up too much space and is easy to keep clean. Even the cat gets on well with my chickens!





**Designed For Your Garden** - The eglu is a truly innovative chicken house designed specifically for the first time chicken keeper. Modern, stylish and available in a range of fresh and vibrant colours, it is the ideal way to keep between 2-4 chickens whether you live in a town or the countryside.

**A Complete Package** - The eglu comes with everything you need to get started. The eglu has wooden roosting bars and a discreet nesting box which can be filled with straw or shredded paper. The freshly laid eggs can be collected using the handy eggport on the side of the house. Letting your chickens out in the morning and shutting them away at night is neatly done using the handle on the top of the eglu.

**Low Maintenance** - The eglu is quick and easy to clean with a slide out tray that neatly collects all the droppings. You can add these to your composter to make wonderful fertilizer for your plants. The lid can be removed to give access for a complete clean. The eglu's smooth plastic surfaces can be washed with a hose - no difficult corners or absorbent materials. Unlike wooden housing, you do not need to treat your eglu - saving you time and money.

**Well Insulated** - The eglu has twin walled insulation and draught free ventilation keeping your chickens warm in winter and cool in summer. The run has a large shade that shelters your chickens from the wind, sun and rain.

**'The eglu is the best coop in the world!'**

**John Halliday**

We waited with such excitement for the eglus arrival & gleefully set it out for the hens. They took to it right away & soon one of the chickens was laying beautiful brown eggs. I think they feel very safe and secure in there. We certainly like it and are so glad we got one. I never would have guessed that chickens would make such fun and entertaining pets.



**No Foxes Allowed™** - The run is made from strong steel weld mesh impossible for predators to break. A unique anti-tunnel skirt sits flat on the ground and prevents animals from digging in. The run has spacious vertical sides and gives your chickens plenty of room. You can extend the run in 1m sections if you wish. The eglu can be positioned on grass or any other surface such as wood chippings or rough ground where the chickens can rummage.

**Specially Designed Feeder And Drinkers** - The eglu comes complete with unique food and water containers which are easy to fill, keep the feed clean, dry and reduce spillage. These hold enough food and water for 10 chickens for 2 days, so you can confidently leave them for a weekend.



Let your chickens out in the morning and shut them away at night using the front door.



Collecting your eggs every morning is such a thrill.



You can position the eglu on a layer of bark chippings. Inside, chickens have a nesting box and roosting bars for perching at night.



Any droppings done in the eglu are collected on the dropping tray and are great for your compost.



An eglu will fit into gardens of all shapes and sizes. As a guide 6m(20ft) by 8m(30ft) is plenty of space to move your eglu around in.



The specially designed food and water containers can be accessed for refilling through the run door.



The eglu's unique anti-tunnel skirt stops foxes digging and protects your chickens.

## You can choose from 6 fantastic colours



### Free extras worth over £50 with your eglu and run



Do you still take a bottle of wine to dinner parties? Eggs from your own hens presented in these boxes make a lovely gift.



A comprehensive guide describing all you need to know about the art of keeping chickens.



Omlet feed and water containers match your eglu and have been specially designed to attach to the run so that they keep food and water off the ground.



A lifetime's supply of eggs with every chicken! A chicken can lay 6 eggs a week, that's over 300 eggs a year.

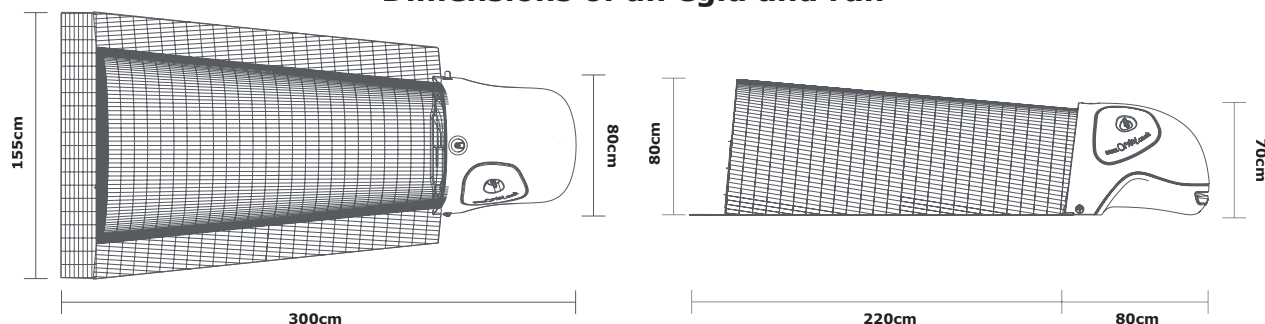


The stylish dark green all weather shade can be easily positioned on the run to provide shelter for chickens with perfect plumages!



We are so confident that you will love keeping chickens with the eglu, that Omlet offer you a 30 day money back guarantee if you are not entirely satisfied with your eglu and chickens.

### Dimensions of an eglu and run



## Ordering your eglu

### Eglu Package

#### Comes complete with:

- Eglu
- Secure run
- Feeder & drinker
- 10 egg boxes
- Shade
- Chicken guide
- Delivery\*
- 30 day money back guarantee



\*Please note there is an extra delivery cost in the following areas:  
Scottish Highlands £10  
Isle of Wight & Northern Ireland £20  
Eire & Offshore Islands £30  
Please call for the latest prices.

**£360**

### Eglu Package with Chickens

#### Comes complete with:

- Eglu
- Secure run
- 2 chickens
- Feeder & drinker
- 10 egg boxes
- Shade
- Feed
- Chicken guide
- Delivery
- Installation and mini course in keeping chickens
- 30 day money back guarantee



**£395**

Call **0845 450 2056** or order online at **www.omlet.co.uk**



# eglu cube



**The Revolutionary New Eglu Cube** – The ideal way to keep up to 10 chickens in a town or country garden. It is based on the same revolutionary technology as the original eglu and makes keeping a larger number of chickens practical, fun and rewarding.

**Flexible Design** - The eglu cube comes in three different combinations. It can be used as a stand alone house in an existing run. Or with the standard 2m run which can then be extended in 1m lengths for keeping up to 10 chickens in comfort and safety.

**Low Maintenance** - The chickens have a large sleeping area with wooden roosting bars. All the droppings fall through the slats onto the slide out dropping trays, which makes light work of the weekly clean. For a thorough clean the lid and back panel can be removed to give full access. The smooth plastic surfaces can then be washed with a hose and there are no awkward corners or absorbent materials which attract red mite. Unlike wooden housing, you do not need to treat your eglu - saving you time and money.

**Well Insulated** - The eglu cube has twin walled insulation and draught free ventilation keepings your chickens warm in winter and cool in summer.

**Collecting Your Eggs** - The eglu cube has a nesting box which accommodates 3 chickens at the same time. The fresh eggs can then be conveniently collected via a handy egg collection port in the side of the house.

**No Foxes Allowed™** - The run is made from strong steel weld mesh impossible for predators to break. A unique anti-tunnel skirt sits flat on the ground and prevents animals from digging in. The spacious run gives your chickens plenty of room and the large shade shelters your chickens from the sun and rain.

**Easy To Move** - You can move the eglu cube on your own effortlessly around your garden using the special puncture-proof wheels and easy to operate wheel mechanism.

**Extra Large Feeder And Automatic Drinker** - The eglu cube comes with a special drinker that can be connected to a garden hose to keep the water continually topped up. The purpose designed feeder is easy to fill, keeps the feed dry and reduces spillage. Both containers hold enough food and water for 10 chickens for 2 days, so you can confidently leave them for a weekend.



Let your chickens out in the morning and shut them away at night using the sliding front door.



Collect your eggs every morning through the conveniently located eggport.



Chickens have a nesting box and roosting bars for perching at night.



All the droppings done at night are collected on the dropping tray. They are great for your compost.



An eglu cube will fit into gardens of all shapes and sizes.



The automatic food and water containers hold enough for a weekend.



Moving the eglu cube is made easy using two foot operated wheels.

## You can choose from 6 fantastic colours



### Free extras worth over £60 with your eglu cube and run



Do you still take a bottle of wine to dinner parties? Eggs from your own hens presented in these boxes make a lovely gift.



A comprehensive guide describing all you need to know about the art of keeping chickens.



Omlet feed and water containers match your eglu and have been specially designed to attach to the run so that they keep food and water off the ground.



A lifetime's supply of eggs with every chicken! A chicken can lay 6 eggs a week, that's over 300 eggs a year.

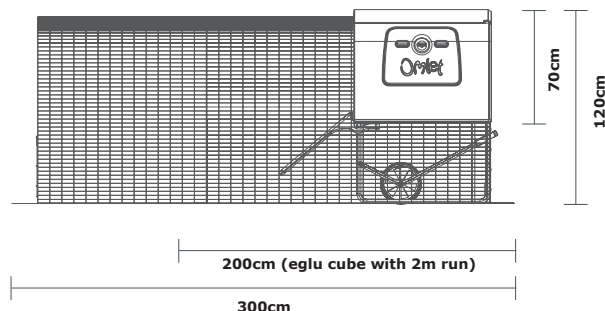
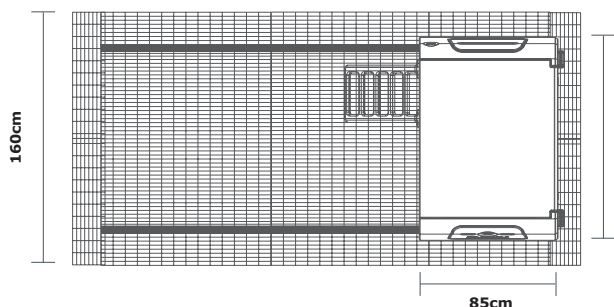


The stylish dark green all weather shade can be easily positioned on the run to provide shelter for chickens with perfect plumages!



We are so confident that you will love keeping chickens with the eglu, that Omlet offer you a 30 day money back guarantee if you are not entirely satisfied with your eglu and chickens.

### Dimensions of an eglu cube and 3m run



## Ordering your eglu cube

### eglu cube (without run)



**Comes complete with:**  
Eglu cube  
Automatic feeder & drinker  
10 egg boxes  
Chicken guide  
30 day money back guarantee

**£425**  
Delivery **£30**

### eglu cube + standard 2m run



**Comes complete with:**  
Eglu cube  
Secure 2m run  
Automatic feeder & drinker  
10 egg boxes  
Shade  
Chicken guide  
30 day money back guarantee

**£595**  
Delivery **£35**

### eglu cube + standard 2m run + 1m extension



**Comes complete with:**  
Eglu cube  
Secure 3m run  
Automatic feeder & drinker  
10 egg boxes  
Shade  
Chicken guide  
30 day money back guarantee

**£695**  
Delivery **£40**

**Chicken delivery** - If you live within our van delivery area then you might want to add some chickens and feed to your order. You can order a maximum of 10 chickens at a time. See page 2 for details.



**Organic Chicken Food**  
Contains everything to keep your chickens healthy and laying.



**£10**



Miss Pepperpot



Gingernut Ranger

**£10 ea.**

Call **0845 450 2056** or order online at **www.omlet.co.uk**



# The Omlet Shop

In the Omlet shop you can find everything you need to keep your eglu and chickens in tip top condition. You can order more chicken food, browse for books on chickens and find unusual items such as egg timers and mini frying pans that make perfect gifts for hen-thusiasts. We also stock accessories for eglus and (probably) the worlds largest selection of egg cups!



## Feed

Omlet can supply you with all your chicken's food requirements delivered direct to your door. As well as the superb organic layers pellet that is the staple of their diet, we also have treats such as organic corn, meal worms and tubs of grit to ensure proper digestion and strong egg shells.



## Eglu Accessories

To enable you to create the perfect eglu we have designed a range of accessories. You can buy extensions for your run, different sized shades and extra feeders and drinkers.



## Health

Omlet's chickens are fully vaccinated for life and generally chickens are very hardy but they can, like any creature, occasionally feel a bit under the weather so we have a good selection of mainly natural tonics to help revive them.



## Accessories

A full range of useful accessories such as a flexible, easy to erect netting for fencing off part of your garden and screw in pegs for securing the eglu to uneven ground.



## Kitchen and eggcups

With so many delicious fresh eggs every day you'll be busy in the kitchen! We have a range of fabulous kitchen gadgets for turning eggs into amazing cakes, souffles and of course a huge collection of egg cups for you to choose from.



## Gifts

Whether you're choosing for yourself or looking for a present for someone with chickens the Omlet shop is sure to have something. From chicken cards and cockerel alarm clocks to doormats and doorstops the Omlet shop has it all.



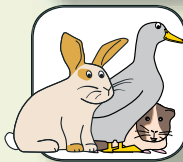
## Clothing

With a stylish eglu and equally chic chickens you will want to look your best when you're out in the garden. The Omlet shop comes to the rescue with a range of T-Shirts, fleeces and even aprons so you'll always look your best.



## Books

As you can imagine, chickens are a favourite theme among authors. We have a carefully edited selection of the best books available on looking after chickens, breed guides and even a book dedicated to cooking with eggs.



## Eglus for other animals

If you have a guineapig, rabbit or duck don't despair they can have an eglu too! Visit [www.omlet.co.uk](http://www.omlet.co.uk) or call us on 0845 450 2056 and we'll happily tell you more.



# Join the Omlet Club

## The Omlet Website



A fantastic resource and a place to make new friends.

Need to know more about the eglu or keeping chickens? Then look no further than the Omlet website. You'll find sections on all our products and short video clips of the eglu in use. A breeds directory on the website features over 50 of the most popular and extraordinary varieties from all over the world. You will also find comprehensive guides covering everything from daily chicken routines to seasonal care and even a description of how an egg is formed.

## The Omlet Club

As an eglu owner you will have access to the Omlet Club on the Omlet website. The club includes several areas including a forum, a gallery and a library of Omlet Newsletters. It's a hugely enjoyable and lively community where people with lots of experience of keeping chickens in eglus share tips and advice with people eagerly expecting their first egg.

The gallery pages are filled with pictures of eglus and chickens, there is a special area dedicated to images of "my first egg" and you can put names to faces in the "meet the eglu owners" pages. With well over a thousand members there's never a dull moment in the Omlet Club!



See more photos at [club.omlet.co.uk/gallery](http://club.omlet.co.uk/gallery)

# Omlet

To order these items please call  
**0845 450 2056**  
or you can order and pay securely online at  
**[www.omlet.co.uk](http://www.omlet.co.uk)**